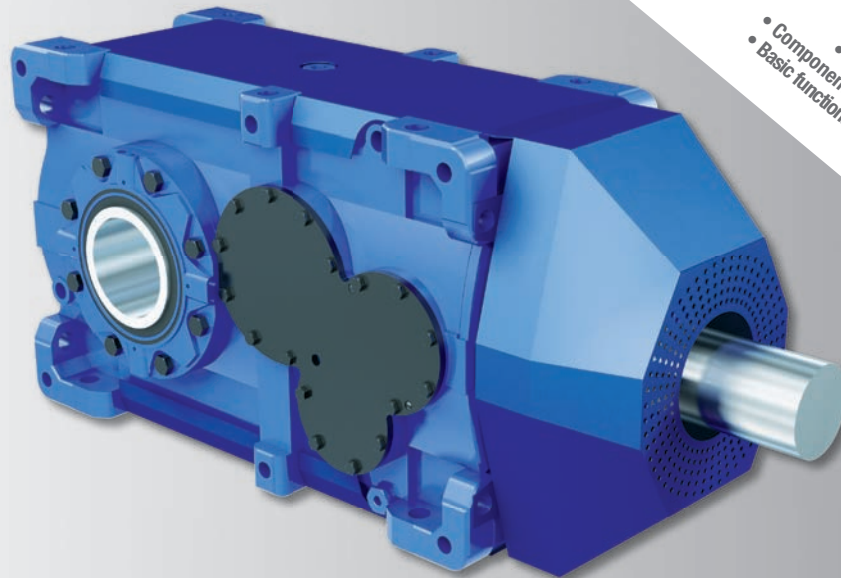


Your application: Handling technology

Our solution: C4 Series Conveyor

novation • High efficiency • Innovation • High efficiency • Innovation • High efficiency • Innovation • High efficiency



- Innovative all-round concept guarantees "best fit" and reduced TCO
- High efficiency Design – High efficiency
- Component kits offer scaling of application functions
- Basic functionalities in the basic design facilitate high cost effectiveness

Torque up to 50,000 Nm

System attributes:

Housing design optimised for

- High stiffness
- High efficiency factor (high heat limit performance)
- Versatile scaling without (cost) impact to the basic design

Construction kit optimised for

- High number of multiple-use components
- Scaling possibilities for meeting application-specific requirements
- Basic principle:

Only as many features as needed, scaling where possible

Basic functionalities:

Basic functionalities cover conventional performance needs:

- Various sealing systems for input and output shafts
- Bevel gearboxes in 3-, 4-, 5- stage design
- Wide transmission spectrum from $i = 12.5 \dots > 2000$ (with primary reduction gearing)
- Versatile shaft options, for example, hollow shafts, solid shafts
- Applicable in typical installation positions and designs, for example, mounted on motor base plate or with IEC motor adaptor
- Designed for operation in harsh application and surrounding conditions

Application features Conveyor* product series:

- Scaling for special operating conditions, for example, with a high storage life span, through the "Heavy Duty Bearing" design
- Application possibilities for special surrounding conditions, for example, high temperatures, with the "ProCool" system series
- Application possibilities for special surrounding conditions, for example, high dust level, through function integration with the "advanced protection sealing" assembly series

Your benefits with Premium Stephan:

- Best cost-performance ratio
- High availability thanks to large number of multiple-use components
- Functionality determines the total cost – no unnecessary features in the basic design
- "Best fit" – a custom designed drive for your application

More than 80 years of experience in geared motor technology.

More than 25 years of experience in HEAVY DUTY handling technology, e.g. loose bulk goods, rolling mill.

We help make your job a success!

Performance range C4 Conveyor.



Size

Features		J	K	L	M
Torque [kNm]		25	31,5	40	50
Motor power [kW]	from	5,5	5,5	7,5	7,5
	up to	160	200	200	250
Ratio	Standard, 3/4 stage	12 ... 315	12 ... 315	12 ... 315	12 ... 315
	with prestage	... > 2000	... > 2000	... > 2000	... > 2000
Outside dimens. app.	L x W x H [mm]	1094x367x560	1094x367x560	1243x430x640	1243x430x640
Mount. dimens. app.	Footprints L x W [mm]	700x330	700x330	775x360	775x360
Housing material	Grey cast iron GG 25	●	●	●	●
	Spheroidal cast iron GGG 40	○	○	○	○
Housing	Heavy duty design	●	●	●	●
Weight	[kg]	800	850	900	1050
Input	Input drive shaft	●	●	●	●
	IEC motor flange	○	○	○	○
Input sealing	Labyrinth sealing HSS	●	●	●	●
	Oil seal HSS	○	○	○	○
	Double oil seal HSS	○	○	○	○
	Labyrinth sealing with regreasing facility (Taconite)*	○	○	○	○
Output	Solid shaft Ø [mm]	140	140	160	170
	Hollow shaft Ø [mm]	135	135	150	160
	Hollow shaft with shrink disc	○	○	○	○
Output sealing	Labyrinth sealing LSS	●	●	●	●
	Oil seal LSS	○	○	○	○
	Double Oil seal LSS	○	○	○	○
	Labyrinth sealing with regreasing facility (Taconite)*	○	○	○	○
Mounting position	Horizontal ... Inclined	●	●	●	●
Lubrication	Splash lubrication	●	●	●	●
Painting	3 component epoxy paint	●	●	●	●
	increased protection for rough environmental conditions	○	○	○	○
Cooling	Fan on the input shaft	○	○	○	○
	Increased cooling - ProCool System	○	○	○	○
Bearing	Long life bearings	●	●	●	●
	Heavy Duty Bearings	○	○	○	○
Back stop	Integrated back stop, oil lubricated	○	○	○	○
Torque arm	Torque arm	○	○	○	○
Oil level control	Oil dip stick	●	●	●	●
	Oil level sensor	○	○	○	○
	Oil level indicator	○	○	○	○
Breather	Breather with dust filter	●	●	●	●
Maintenance	Oil drain with large diameter	●	●	●	●
	Oil drain cock	○	○	○	○
	Oil filler	○	○	○	○
	Relubrication facility for input and output shaft	●	●	●	●
	Heater	○	○	○	○
	Oil level switch	○	○	○	○
Accessories	Motor base plate	○	○	○	○
	Drive motor (all makes)	○	○	○	○
	Coupling HSS and LSS	○	○	○	○
	Fluid coupling	○	○	○	○
	Brake or brake motor	○	○	○	○
	Auxiliary drive	○	○	○	○
Norm / Standards	ISO 6336	●	●	●	●

* Advanced Protection Sealing

● Standard

○ Option

Flexible range of products. Fast implementation. Reliable partnership.



Premium Stephan Hameln

Zweigniederlassung der Premium Stephan B.V.
D – 31789 Hameln / Germany
Ohsener Strasse 79-83
Tel.: +49 (0) 5151 / 780-0
Fax: +49 (0) 5151 / 780-441
Email: info@premium-stephan.com
www.premium-stephan.com

Service

Tel.: +49 (0) 5151 / 780-0

Weekend freecall

0800 43 27 269

(Gearbox)

Email:

service@premium-stephan.com